



TEMPERATURE CONTROL  
FOR **TODAY & TOMORROW**

  
**mitsubishi**  
**HEAVY INDUSTRIES**

## FDF200VSAPVD2

Capacitate nominala de racire: **19.0 KW**



## Poze unitate interna si unitate externa



## Specificatii

|  |                  |   |                     |
|--|------------------|---|---------------------|
| Unitate internă                            |                  | FDF100VD2 x 2                           |                     |
| Unitate externă                            |                  | FDC200VSA                               |                     |
| Sursă de alimentare                        |                  | Trifazic 380-415V,<br>50Hz / 380V, 60Hz |                     |
| Capacitate nominală de răcire (Min-Max)    |                  | kW                                      | 19.0 ( 5.2 ~ 22.4 ) |
| Capacitate nominală de încălzire (Min-Max) |                  | kW                                      | 22.4 ( 3.3 ~ 25.0 ) |
| Power Consumption                          | Răcire/Încălzire | kW                                      | 6.74 / 6.42         |
| EER/COP                                    | Răcire/Încălzire | kW                                      | 2.82 / 3.49         |



## TEMPERATURE CONTROL FOR TODAY & TOMORROW



|  |                                      |                           |                     |                          |
|--|--------------------------------------|---------------------------|---------------------|--------------------------|
| Curent de intrare                                |                                      |                           | A                   | 5                        |
| Max. current                                     |                                      |                           | A                   | 20                       |
| Nivel putere sonoră*1                            | U.I.*3                               | Răcire/Încălzire          | dB(A)               | 65 / 65                  |
|  | U.E.                                 | Răcire/Încălzire          |                     | 72 / 74                  |
| Nivel presiune sonoră*1                          | U.I.*3                               | Răcire (P-Hi/Hi/Me/Lo)    |                     | 54 / 50 / 48 / 44        |
|  |                                      | Încălzire (P-Hi/Hi/Me/Lo) | 54 / 50 / 48 / 44   |                          |
|  | U.E.                                 | Răcire/Încălzire          | 58 / 59             |                          |
| Flux de aer                                      | U.I.*3                               | Răcire (P-Hi/Hi/Me/Lo)    | m <sup>3</sup> /min | 29 / 26 / 23 / 19        |
|  |                                      | Încălzire (P-Hi/Hi/Me/Lo) |                     | 29 / 26 / 23 / 19        |
|  | U.E.                                 | Răcire/Încălzire          |                     | 135 / 135                |
| Exterior dimensions                              | U.I.                                 | HeightxWidthxDepth        | mm                  | 1,850 x 600 x 320        |
|  | U.E.                                 |                           | mm                  | 1,300 x 970 x 370        |
| Greutate netă                                    |                                      | U.I./U.E.                 | kg                  | 52 / 115                 |
| Refrigerant Type GWP                             |                                      |                           |                     | R410A/2088               |
| Ref.piping size                                  | Lichid/Gaz                           |                           | Ț,mm                | 9.52(3/8") / 22.22(7/8") |
| Lungime țeavă refrigerant (o direcție)           |                                      |                           | m                   | Max.70                   |
| Diferență de nivel suportată                     | Unitate externă este mai sus/mai jos |                           | m                   | Max.30 / Max.15          |
| Interval de funcționare - temperatură exterioară | Răcire*2                             |                           | °C                  | -15~50                   |
|  | Încălzire                            |                           | °C                  | -15~20                   |

**Datorită politicii de continuă îmbunătățire a produselor, ne rezervăm dreptul de a modifica specificațiile tehnice fără nicio notificare prealabilă.**



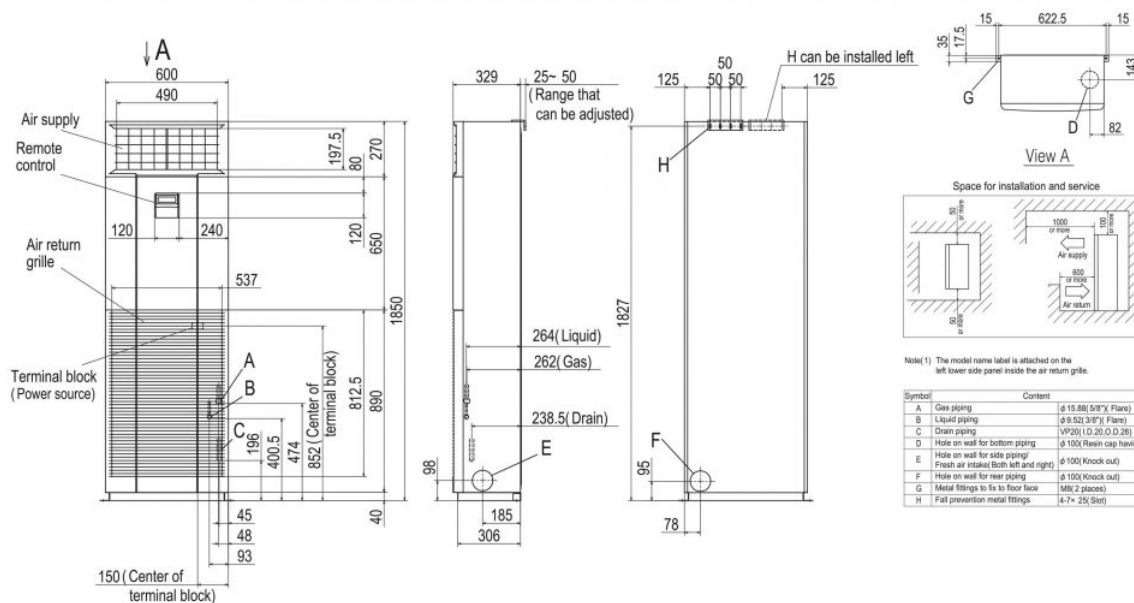
# TEMPERATURE CONTROL FOR TODAY & TOMORROW



|                          |  |  |
|--------------------------|--|--|
| Filtru de aer, cantitate |  | 1 x Filtru lavabil din plastic                 |
| Telecomandă (opțional)   |  | Cu fir:RC-E5 (inclusă)<br>Wireless:RCN-KIT4-E2 |

## Schema tehnica

### ■ DIMENSIONS (Unit:mm) - FDF -



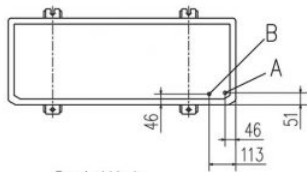
**Datorită politicii de continuă îmbunătățire a produselor, ne rezervăm dreptul de a modifica specificațiile tehnice fără nicio notificare prealabilă.**



# TEMPERATURE CONTROL FOR TODAY & TOMORROW



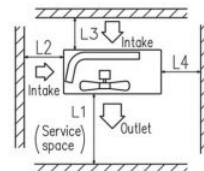
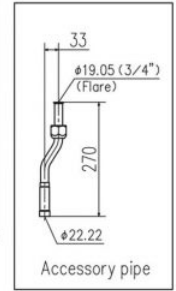
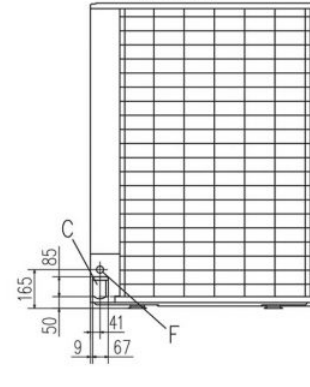
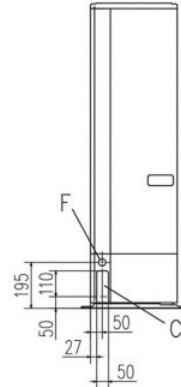
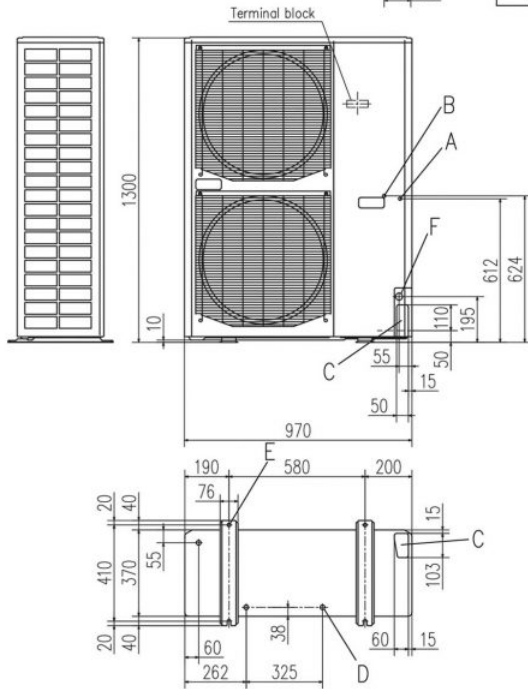
FDC200VSA



| Symbol | Content   |   |
|--------|---|---|
| A      | Service valve connection of the attached connecting pipe (gas side) | φ19.05 (3/4") (Flare)                   |
| B      | Service valve connection (liquid side)                              | φ9.52 (3/8") (Flare)                    |
| C      | Pipe/cable draw-out hole  |   |
| D      | Drain discharge hole  | φ20×3places                             |
| E      | Anchor bolt hole  | M10×4places                             |
| F      | Cable draw-out hole   | φ30 (front)<br>φ30 (side)<br>φ30 (back) |

Notes

- (1) It must not be surrounded by walls on the four sides.
- (2) The unit must be fixed with anchor bolts. An anchor bolt must not protrude more than 15mm.
- (3) Where the unit is subject to strong winds, lay it in such a direction that the blower outlet faces perpendicularly to the dominant wind direction.
- (4) Leave 1m or more space above the unit.
- (5) A wall in front of the blower outlet must not exceed the units height.
- (6) The model name label is attached on the lower right corner of the front panel.
- (7) Connect the Service valve with local pipe by using the pipe of the attachment. (Gas side only)
- (8) Regarding attaching the pipe of accessories, refer to an attached installation manual.



Minimum installation space

| Dimensions | Examples of installation |      |      |
|------------|--------------------------|------|------|
|            | I                        | II   | III  |
| L1         | Open                     | Open | 500  |
| L2         | 300                      | 5    | Open |
| L3         | 150                      | 300  | 150  |
| L4         | 5                        | 5    | 5    |

**Datorită politicii de continuă îmbunătățire a produselor, ne rezervăm dreptul de a modifica specificațiile tehnice fără nicio notificare prealabilă.**