



TEMPERATURE CONTROL
FOR **TODAY & TOMORROW**


MITSUBISHI
HEAVY INDUSTRIES

FDTW45KXE6F

Capacitate nominala de racire: **4.5 KW**



Specificatii

Capacitate nominală de răcire		kW	4.5
Capacitate nominala de incalzire		kW	5.0
Sursă de alimentare			Monofazic 220-240V, 50Hz
Consumul de energie	Racire	kW	0.10-0.10
	Incalzire	kW	0.10-0.10
Nivel putere sonoră		dB(A)	58
Nivel de presiune sonoră racire		db(A)	P-Hi: 42 Hi:38 Me:34 Lo:31
Dimensiuni exterioare unitate	I x L x A	mm	Unitate:325x820x620 Panou:20x1120x680
Greutate netă		kg	Unitate:21 Panou:8.5
Flux de aer		m3/min	P-Hi: 14.5 Hi:12 Me:10 Lo:9
Aport de aer proaspat			Este posibil
Panou			TW-PSA-26W-E
Filtru de aer			Filtru lavabil x2 (Lavabil)



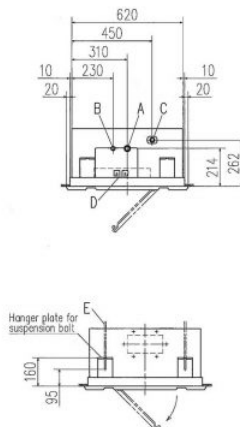
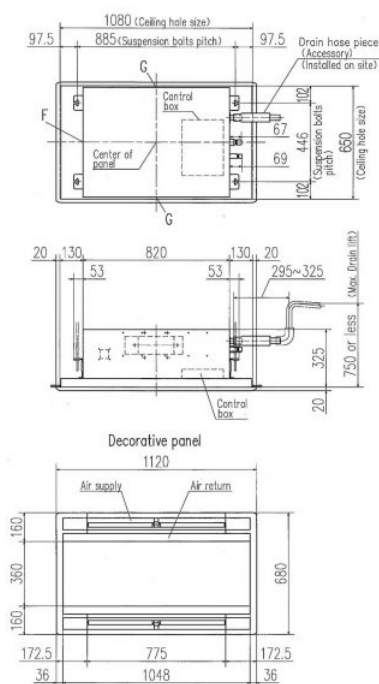
TEMPERATURE CONTROL FOR TODAY & TOMORROW



Telecomanda (opționalal)		Cu fir: RC-EX3A, RC-E5, RCH-E3 Fara fir: RCN-TW-E2
Dimensiuni țeavă refrigerant	mm(in)	Refrigerant lichid: $\varnothing 6.35(1/4")$ Refrigerant gazos: $\varnothing 12.7(1/2")$
Refrigerant	Tip/GWP	R410A / 2088

Schema tehnica

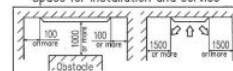
FDTW28KXE6F, 45KXE6F, 56KXE6F, 71KXE6F



Symbol	Model	28	45, 56	71
A	Gas piping	$\varnothing 21.3(3/4")$	$\varnothing 21.3(3/4")$	$\varnothing 21.3(3/4")$
B	Liquid piping	$\varnothing 6.35(1/4")$ (Flare)	$\varnothing 6.35(1/4")$ (Flare)	$\varnothing 6.35(1/4")$ (Flare)
C	Drain piping	VP25 (O.D. 32)		
D	Hole for wiring			
E	Suspension bolts	(M10)		
F	Outside or opening for ducting	(Knock out)		
G	Air outlet opening for ducting	(Knock out)		

Notes (1) The model name label is attached on the lid of the control box.

Space for installation and service



Datorită politicii de continuă îmbunătățire a produselor, ne rezervăm dreptul de a modifica specificațiile tehnice fără nicio notificare prealabilă.