



TEMPERATURE CONTROL
FOR **TODAY & TOMORROW**


MITSUBISHI
HEAVY INDUSTRIES

FDTW56KXE6F

Capacitate nominala de racire: **5.6 KW**



Specificatii

Capacitate nominală de răcire		kW	5.6
Capacitate nominala de incalzire		kW	6.3
Sursă de alimentare			Monofazic 220-240V, 50Hz
Consumul de energie	Racire	kW	0.10-0.10
	Incalzire	kW	0.10-0.10
Nivel putere sonoră		dB(A)	58
Nivel de presiune sonoră racire		db(A)	P-Hi: 42 Hi:38 Me:34 Lo:31
Dimensiuni exterioare unitate	I x L x A	mm	Unitate:325x820x620 Panou:20x1120x680
Greutate netă		kg	Unitate:21 Panou:8.5
Flux de aer		m3/min	P-Hi: 14.5 Hi:12 Me:10 Lo:9
Aport de aer proaspat			Este posibil
Panou			TW-PSA-26W-E
Filtru de aer			Filtru lavabil x2 (Lavabil)



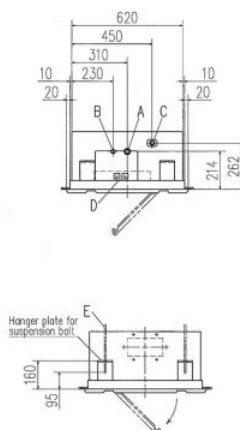
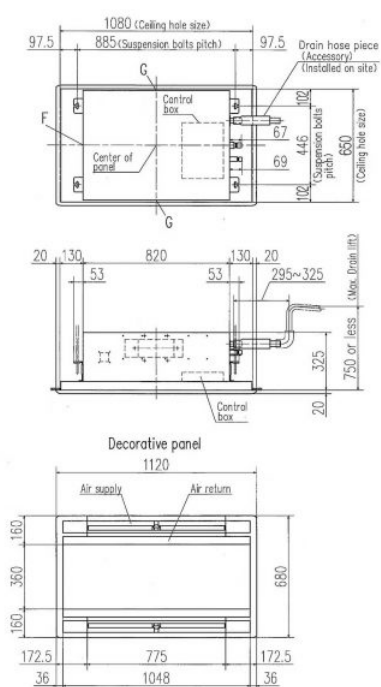
TEMPERATURE CONTROL FOR TODAY & TOMORROW



Telecomanda (opționalal)		Cu fir: RC-EX3A, RC-E5, RCH-E3 Fara fir: RCN-TW-E2
Dimensiuni țeavă refrigerant	mm(in)	Refrigerant lichid: $\varnothing 6.35(1/4")$ Refrigerant gazos: $\varnothing 12.7(1/2")$
Refrigerant	Tip/GWP	R410A / 2088

Schema tehnica

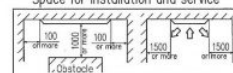
FDTW28KXE6F, 45KXE6F, 56KXE6F, 71KXE6F



Symbol	Model	28	45, 56	71
A	Gas piping	$\varnothing 21.3(\varnothing 1/2)$	$\varnothing 21.3(\varnothing 1/2)$	$\varnothing 21.3(\varnothing 1/2)$
B	Liquid piping	$\varnothing 6.35(1/4")$ (Flare)	$\varnothing 6.35(1/4")$ (Flare)	$\varnothing 6.35(1/4")$ (Flare)
C	Drain piping	VP25 (O.D. 32)		
D	Hole for wiring			
E	Suspension bolts	(M10)		
F	Outside or opening for ducting	(Knock out)		
G	Air outlet opening for ducting	(Knock out)		

Notes (1) The model name label is attached on the lid of the control box.

Space for installation and service



Make a space of 4000 or more between the units when installing more than one.

Datorită politicii de continuă îmbunătățire a produselor, ne rezervăm dreptul de a modifica specificațiile tehnice fără nicio notificare prealabilă.