



TEMPERATURE CONTROL
FOR **TODAY & TOMORROW**


mitsubishi
HEAVY INDUSTRIES

FDU650FKXZE1

Capacitate nominala de racire: **9.0 KW**



Specificatii

Capacitate nominală de răcire		kW	9.0
Capacitate nominala de incalzire		kW	6.5
Sursă de alimentare			Monofazic 220-240V, 50Hz
Consumul de energie	Racire	kW	0.24-0.25
	Incalzire	kW	0.24-0.25
Nivel de presiune sonoră racire		db(A)	Hi:31
Dimensiuni exterioare unitate	I x L x A	mm	280x950x635
Greutate netă		kg	34
Flux de aer		m ³ /min	Hi:11
Presiunea statica externa maxima		Pa	200 (la capacitatea maxima a fluxului de aer)
Filtru de aer			Intreaba un specialist ATX HVAC
Telecomanda (opționalal)			Cu fir: RC-EX3A, RC-E5, RCH-E3 Fara fir: RCN-KIT4-E2



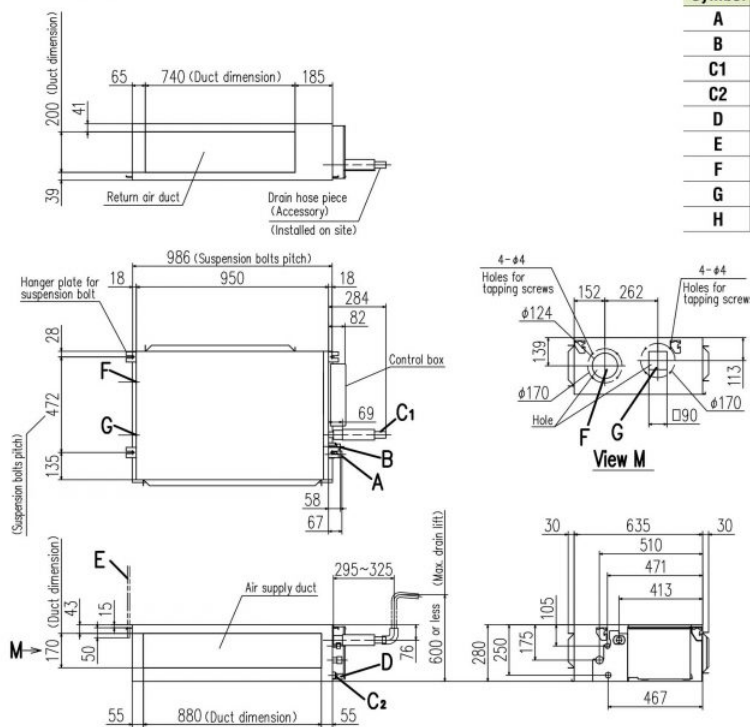
TEMPERATURE CONTROL FOR TODAY & TOMORROW



Dimensiuni țevă refrigerant	mm(in)	Refrigerant lichid: $\varnothing 9.52(3/8")$ Refrigerant gazos: $\varnothing 15.88(5/8")$
-----------------------------	--------	--

Schema tehnică

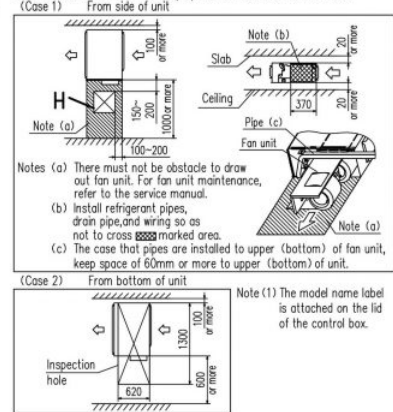
FDU650FKXZE1



Symbol	Content	
A	Gas piping	$\varnothing 15.88 (5/8")$ (Flare)
B	Liquid piping	$\varnothing 9.52 (3/8")$ (Flare)
C1	Drain piping	VP25(O.D.32)
C2	Drain piping(Gravity drainage)	V20(O.D.26)
D	Hole for wiring	
E	Suspension bolts	M10
F	Outside air opening for ducting	(Knock out)
G	Air outlet opening for ducting	(Knock out)
H	Inspection hole	(450X450)

Space for installation and service

Select either of two cases to keep space for installation and services.



Datorită politicii de continuă îmbunătățire a produselor, ne rezervăm dreptul de a modifica specificațiile tehnice fără nicio notificare prealabilă.