



TEMPERATURE CONTROL  
FOR TODAY & TOMORROW

  
**mitsubishi**  
**HEAVY INDUSTRIES**

## FDUH36KXE6F

Capacitate nominala de racire: **3.6 KW**



## Specificatii

Capacitate nominală de răcire		kW	3.6
Capacitate nominala de incalzire		kW	4.0
Sursă de alimentare			Monofazic 220-240V, 50Hz
Consumul de energie	Racire	kW	0.05-0.07
	Incalzire	kW	0.05-0.07
Nivel putere sonoră		dB(A)	60
Nivel de presiune sonoră racire		db(A)	P-Hi: 39 Hi: 33 Me: 30 Lo: 27
Dimensiuni exterioare unitate	I x L x A	mm	257x570x530
Greutate netă		kg	22
Flux de aer		m <sup>3</sup> /min	P-Hi: 8.5 Hi: 7 Me: 6.5 Lo: 6
Presiunea statica externa maxima		Pa	30
Aport de aer proaspat			Este posibil de la retur duct
Filtru de aer			Kit filtru: UH-FL1E (opționalal)



## TEMPERATURE CONTROL FOR TODAY & TOMORROW



Telecomanda (opționalal)		Cu fir: RC-EX3A, RC-E5, RCH-E3 Fara fir: RCN-KIT4-E2
Dimensiuni țeavă refrigerant	mm(in)	Refrigerant lichid: ø6.35(1/4") Refrigerant gazos: ø12.7(1/2")

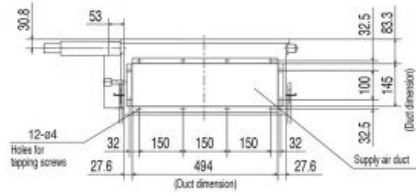
## Schema tehnica

---

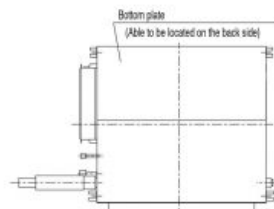
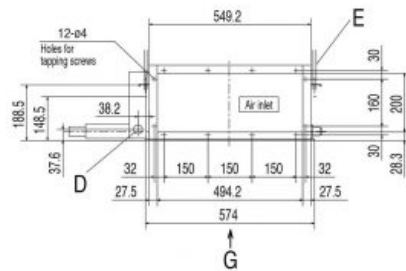
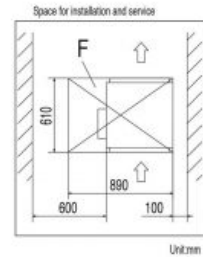
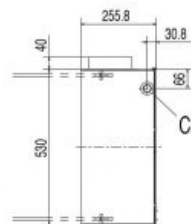
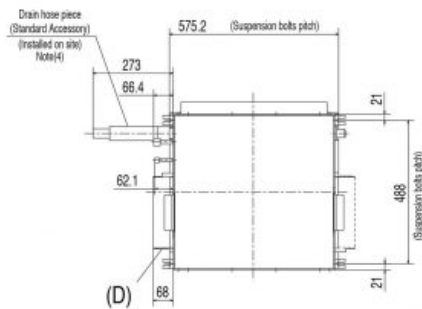
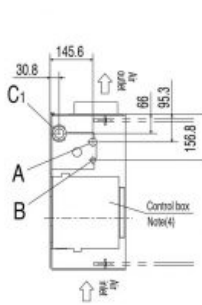
**Datorită politicii de continuă îmbunătățire a produselor, ne rezervăm dreptul de a modifica specificațiile tehnice fără nicio notificare prealabilă.**



# TEMPERATURE CONTROL FOR TODAY & TOMORROW

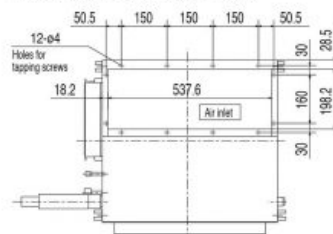


Symbol	Content		
	Model	FDUH22K0E6F, 28K0E6F	FDUH36K0E6F
A	Gas piping	ø9.52 (3/8") (Flare)	ø12.7 (1/2") (Flare)
B	Liquid piping	ø6.35 (1/4") (Flare)	ø12.7 (1/2") (Flare)
C <sub>1</sub> , C <sub>2</sub>	Drain piping	VP20) D.20, O.D.28) Note (2)	
D	Hole for wiring	ø30	
E	Suspension bolts	(M10)	
F	Inspection hole	(Ø35X30) Note (3)	



View G

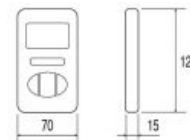
In case of Bottom air intake



View G

(After bottom plate is replaced to back side)

Simple remote control



## Notes

- (1) The model name label is attached on the fan case inside the air return grille.
- (2) Prepare the connecting socket (VP20) on site. (As for drain piping, it is possible to choose C<sub>1</sub> or C<sub>2</sub>)
- (3) When control box is located on the reverse side, installation space should be modified to new location.
- (4) Control box and Drain hose piece are able to be relocated on the reverse side.

**Datorită politicii de continuă îmbunătățire a produselor, ne rezervăm dreptul de a modifica specificațiile tehnice fără nicio notificare prealabilă.**



TEMPERATURE CONTROL  
FOR **TODAY & TOMORROW**



---

**Datorită politicii de continuă îmbunătățire a produselor, ne rezervăm dreptul de a modifica specificațiile tehnice fără nicio notificare prealabilă.**